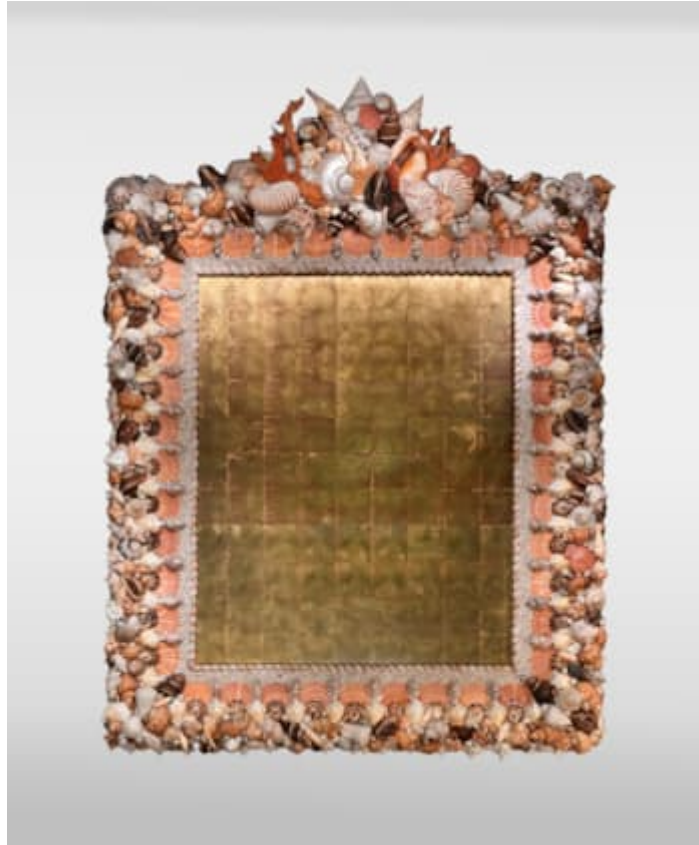


**THOMAS BOOG**

( , 1959 )

**LARGE FRAME WITH SHELLS**



France, Circa 1980

Shells, wooden frame copper plate gilded with golden leaf

Dimensions :

H. 168 cm – W. 135 cm

*H. 66 9/64 in – W. 53 5/32 in*

An imposing frame richly decorated with marine shells, crafted by Thomas Boog in the 1980s. Each detail showcases the exceptional craftsmanship of the artist, known for his unique compositions inspired by marine treasures.

The upper section is distinguished by a central relief composition, dominated by large shells and fragments mimicking coral, bringing baroque majesty to the piece. The sides and base of the frame are meticulously adorned with pearls, scallop shells, sea snails, and small shells arranged in a harmonious chromatic rhythm, alternating between shades of

orange, white, and brown. This rich marine decor frames a copper plate gilded with gold leaf.